



GeoPrecision GmbH
Am Dickhäuterplatz 8
D-76275 Ettlingen
Germany

T +49(0)7243-505419-0
F +49(0)7243-505419-9
E info@geoprecision.de

www.geoprecision.de
www.geo-precision.com

Airplane Mode FG2 datalogger

Enabling and disabling the datalogger's RF-Radio

Inhalt

1. Introduction	3
2. Steps to enable airplane mode of a specific datalogger:.....	4
3. Steps to disable airplane mode (setting to normal operation):	7

1. Introduction

Enabling the airplane mode will disable the radio. The device is not longer available at FG2_Shell software; the wireless data transfer is disabled!

Follow the steps below to enable the airplane-mode of a specific datalogger with FG2-OS.

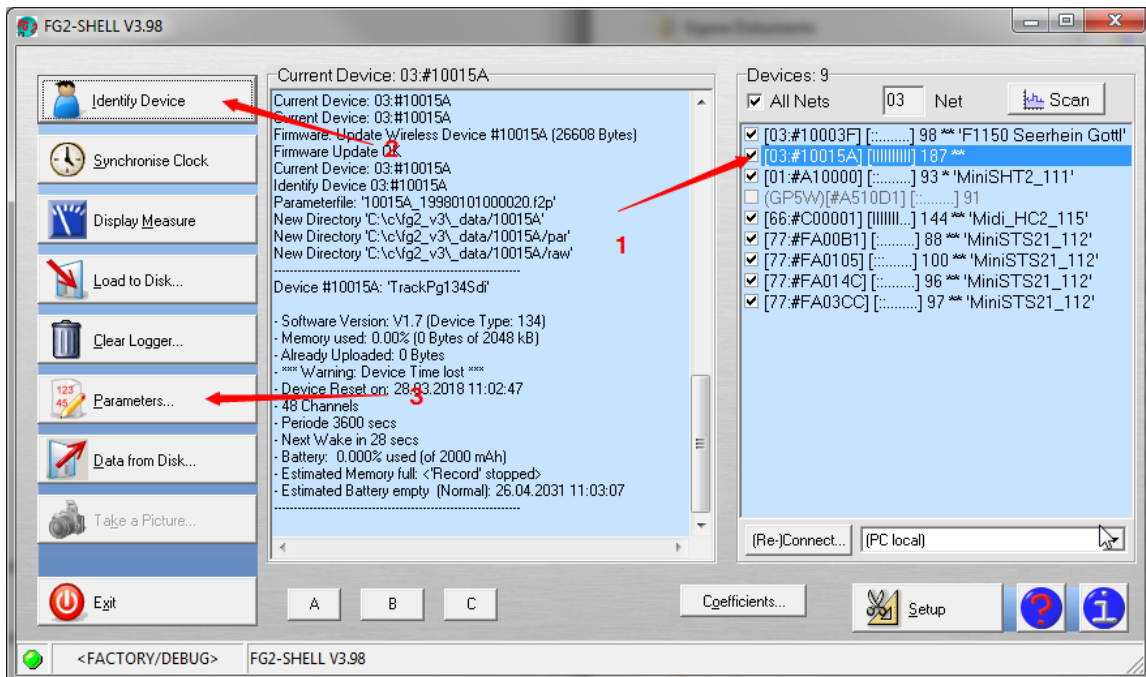
It is possible to disable the radio of **all dataloggers in range** (listed at “Device list” of FG2-Shell) via “Setup”, “All radio OFF”.

→Be careful with this option! **ALL** dataloggers in range will disable their wireless transfer!

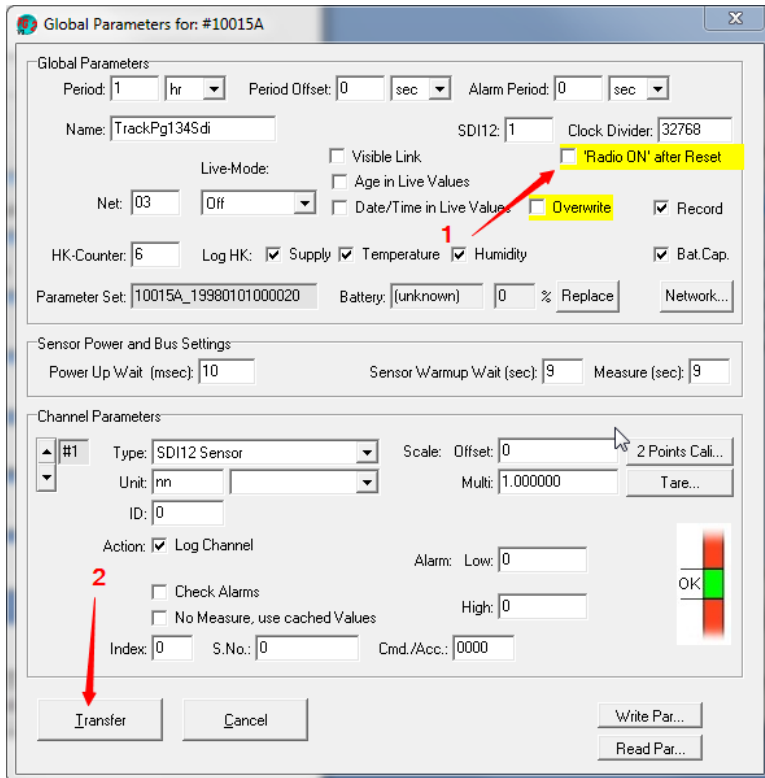
You should prefer the way to enable airplane mode of specific devices!

2. Steps to enable airplane mode of a specific datalogger:

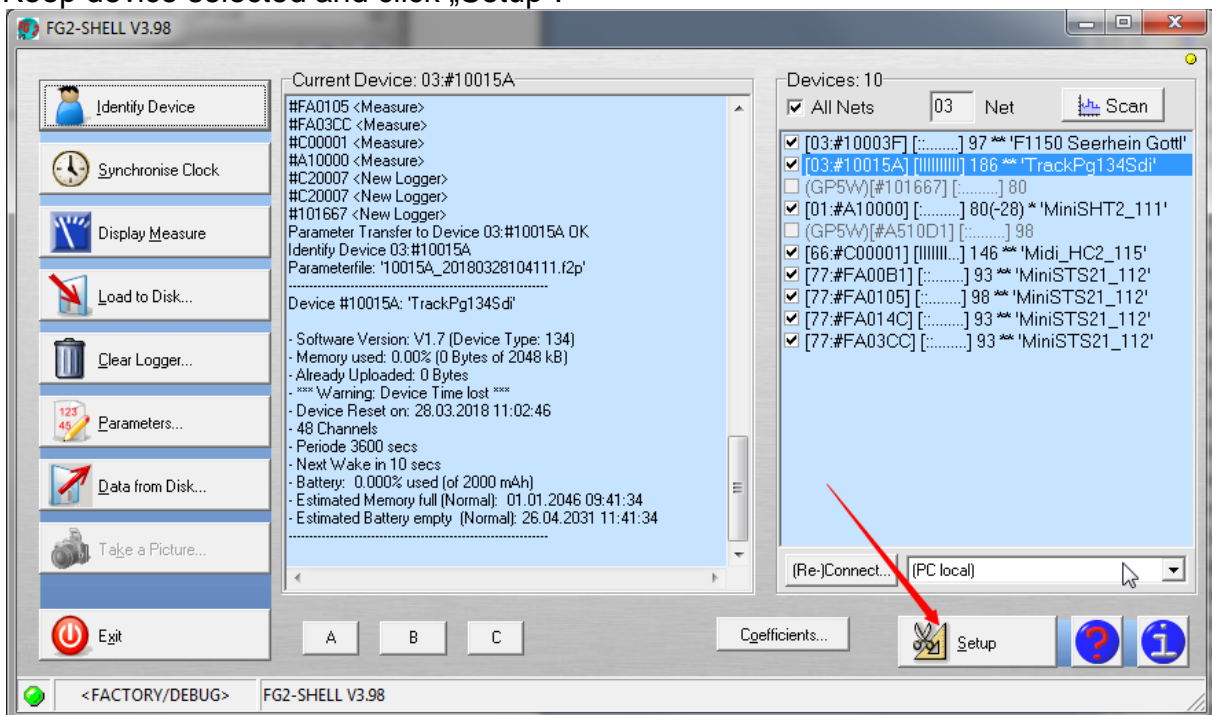
- 1) Select datalogger you want to configure for airplane mode.
- 2) Click "Identify".
- 3) Click "Parameters".



- 1) Disable „Radio on after reset“.
- 2) Click “transfer”.

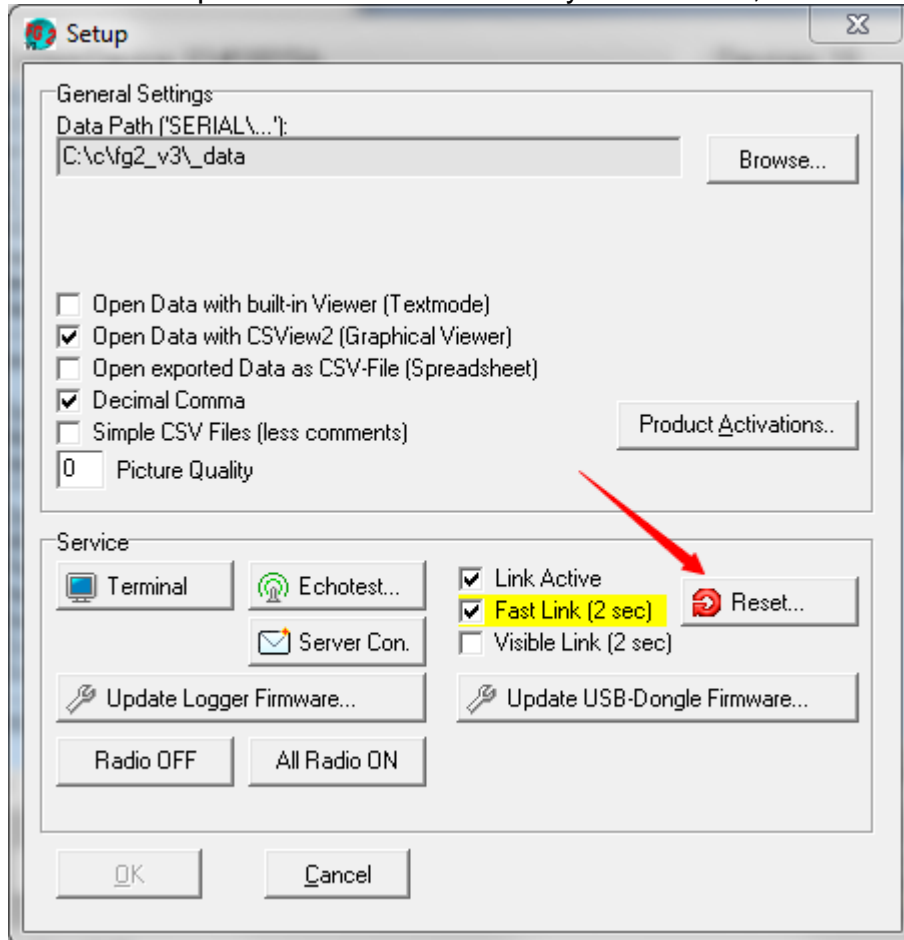


Keep device selected and click „Setup“:



Perform a reset of the device by clicking on “Reset”.

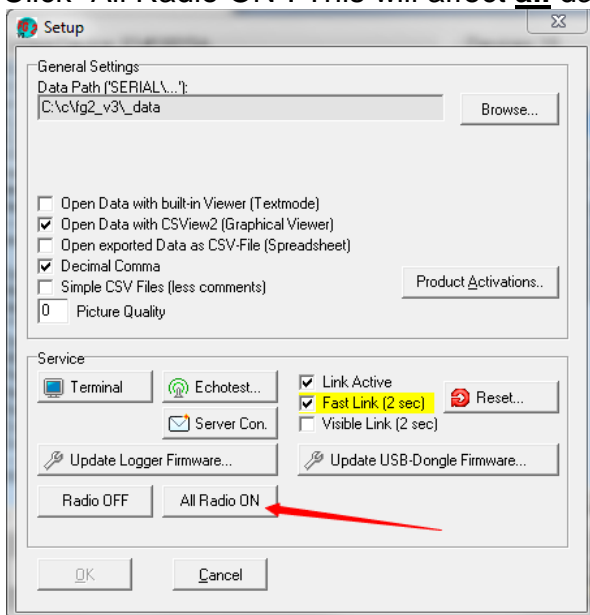
→Now the airplane mode is active until you disable it, see the following steps.



3. Steps to disable airplane mode (setting to normal operation):

The following steps are necessary to set the datalogger back to normal operation mode.

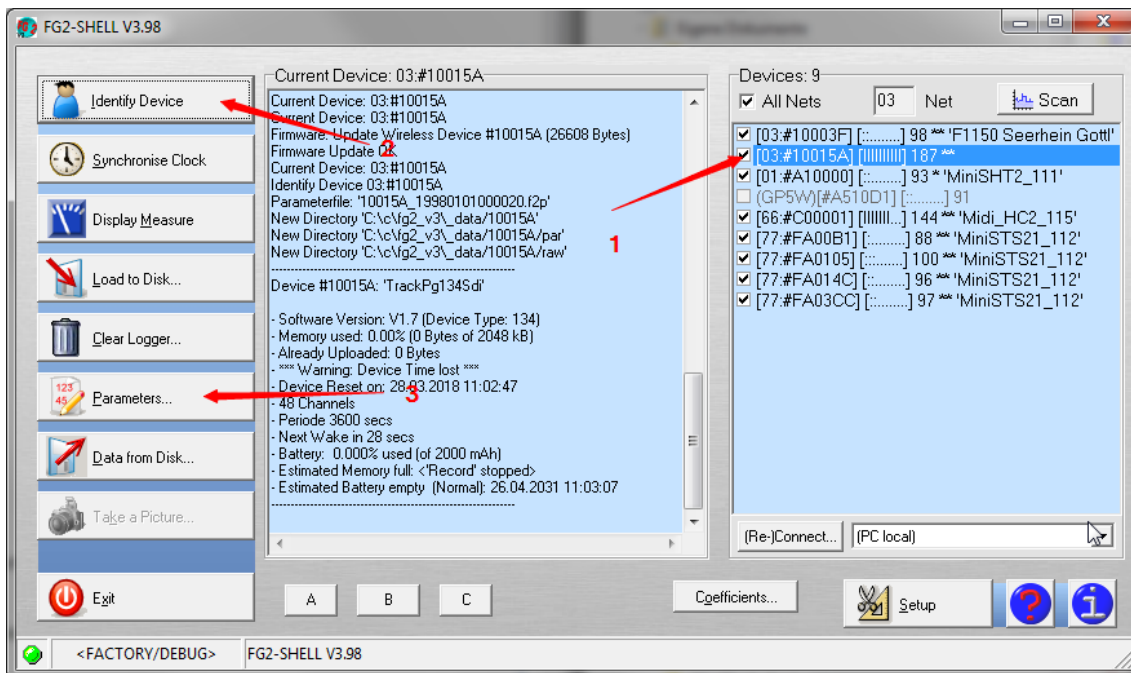
Click “All Radio ON”. This will affect **all** dataloggers in range.



A few seconds later the datalogger is visible again.

In case of a reset it will disappear again. To keep “radio on” you have to change the configuration:

- 1) Select datalogger you want to configure for airplane mode.
- 2) Click “Identify”.
- 3) Click “Parameters”.



- 1) Enable „Radio on after reset“.
- 2) Click “transfer”.

